

MONTHLY MEMBERSHIP PROGRESS REPORT

LOCATION MARYLAND

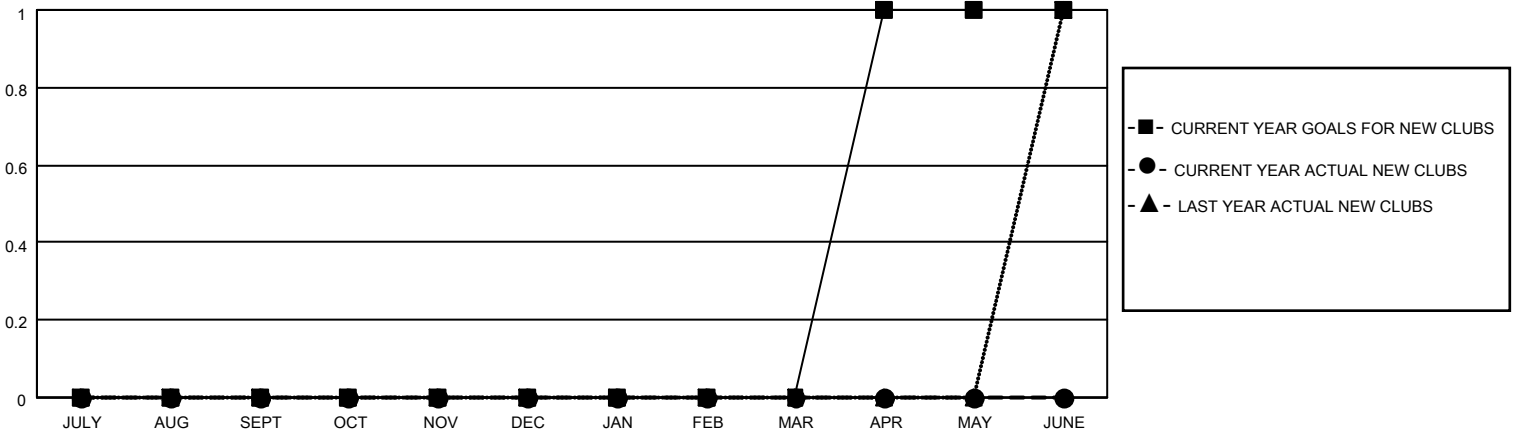
District 22 W

Results as of: 6/30/2021

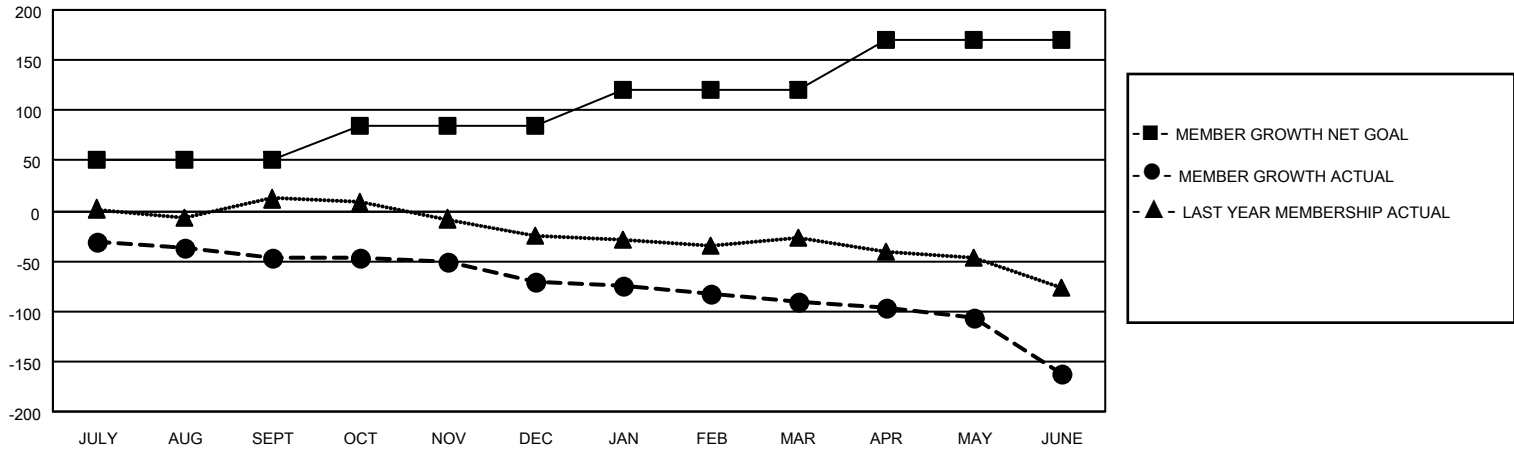
Clubs			
RESULTS FOR 2020-2021			
QUARTER	NEW CLUB GOAL	NEW CLUBS	DROPPED CLUBS
JULY/AUG/SEPT	0	0	1
OCT/NOV/DEC	0	0	1
JAN/FEB/MAR	0	0	0
APR/MAY/JUNE	1	0	1

Members			
RESULTS FOR 2020-2021			
QUARTER	MEMBER GROWTH NET GOAL	MEMBER GROWTH ACTUAL	DROPPED MEMBERS ACTUAL (including transfers)
JULY/AUG/SEPT	50	21	64
OCT/NOV/DEC	35	42	65
JAN/FEB/MAR	35	21	33
APR/MAY/JUNE	50	21	90

GOALS AND ACTUAL NEW CLUBS CUMULATIVE



GOALS AND ACTUAL MEMBERS CUMULATIVE



DROPPED CLUBS: 3	27 CLUBS OF 57 ADDED 1 OR MORE NEW MEMBERS	<u>GENDER DISTRIBUTION</u>
<u>DROPPED MEMBERS</u>	CLICK HERE FOR CUMULATIVE MEMBERSHIP DATA	MALE 1,040 (62.95%)
DECEASED 49		FEMALE 612 (37.05%)
CLUB CANCELLED 0		TOTAL FAMILY UNIT MEMBERS 458
OTHER 203		FAMILY MEMBERS PAYING HALF DUES 238
TOTAL 252		